

BETH ROBERTSON FIDDES

Northwest

by Beaully
Inverness-shire IV4 7AL

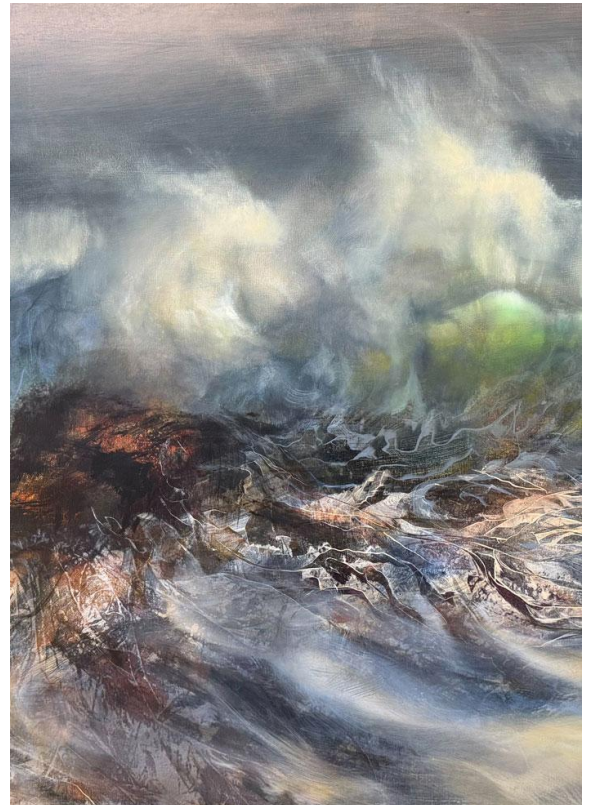
1 May – 29 May 2026
Private View: Friday 1 May, 2pm – 5pm

T: +44 (0) 1463 783 230
art@kilmorackgallery.co.uk
www.kilmorackgallery.co.uk

Kilmorack Gallery is pleased to announce *Northwest*, our fifth solo exhibition of work by Beth Robertson Fiddes (b. 1972). Known for often large paintings that capture the epic grandeur of the north, Robinson Fiddes is unique for the energy and the innovative techniques she brings to each painting and for the repeated visits to her favourite paintings spots, at specific times of the day and year. Her work aims to capture the calm and the chaos of the natural world and the different flows of time.

In *Northwest*, Robertson Fiddes has both looked west from her Elphin studio towards the edges of land and sea to capture a series of sublime waves, as well as east, inland to the moors and waterfalls where the ground is solid and slow-moving.

'Certain things seem transient, fleeting and elusive, alive almost. With Tides, splashes, breaking waves and angry waters I try to catch a moment. In Pieces based on the seemingly unchanging, immovable rocks and mountains, I look for evidence of movement and change. A sense that they have a life on a larger scale, over unimaginable time frames.' Beth Robertson Fiddes



Detail from 'Achiltibuie'

ABOUT BETH ROBERTSON FIDDES

Beth Robertson Fiddes was born on Tiree and grew up in the Highlands. She graduated from Edinburgh College of Arts and now lives and works near Ullapool.

Exhibition Opening Hours: Tuesday – Saturday, 10am – 5pm and by appointment

PRESS ENQUIRIES: For more information and images please contact Tony or Georgina:
art@kilmorackgallery.co.uk / 01463 783 230